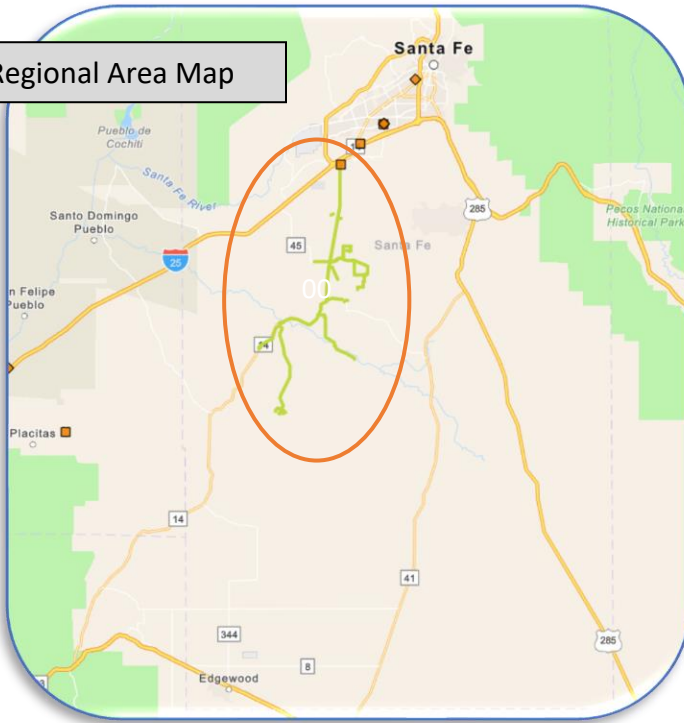


State Pen 13 Distribution Feeder Rebuild

PNM is continuing to invest in our facilities to enhance service in your area, which includes replacing powerlines to increase resilience and reliability in your community.

Regional Area Map



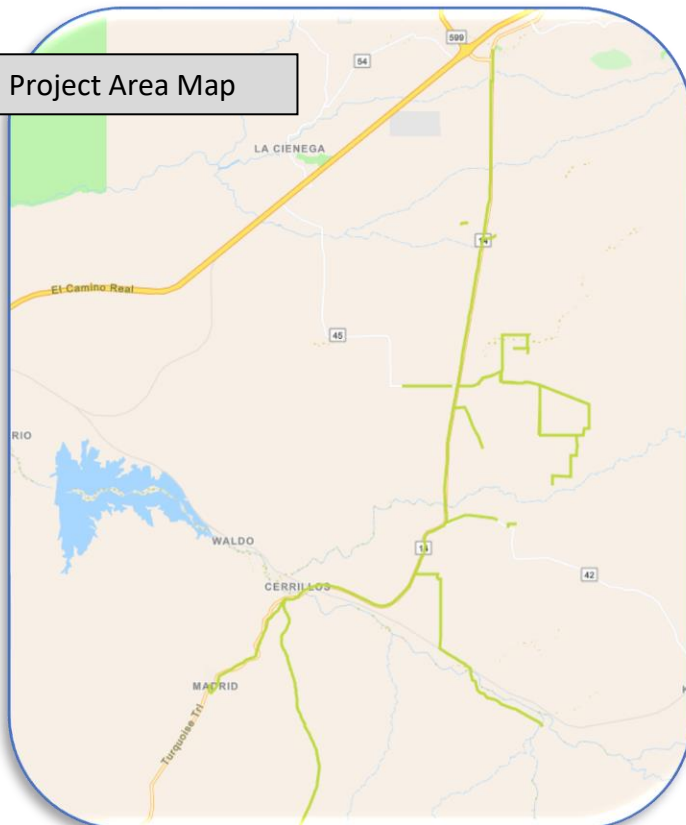
PROJECT DESCRIPTION

This is a distribution powerline rebuild project. The total project length is approximately 50 miles. The project starts at the State Pen Substation and runs south adjacent to NM-14 finishing south through the Ortiz Mountains in Madrid and Dolores Gluch. The powerlines are located along state highways and local streets, passing through residential neighborhoods.

WORK AREAS

Santa Fe County
Cerrillos
Village of Madrid

Project Area Map



PROJECT TIMELINE

The work is forecasted to begin in May 2025 and will last for approximately 14 months. After construction, all work areas will be restored.



Together for New Mexico