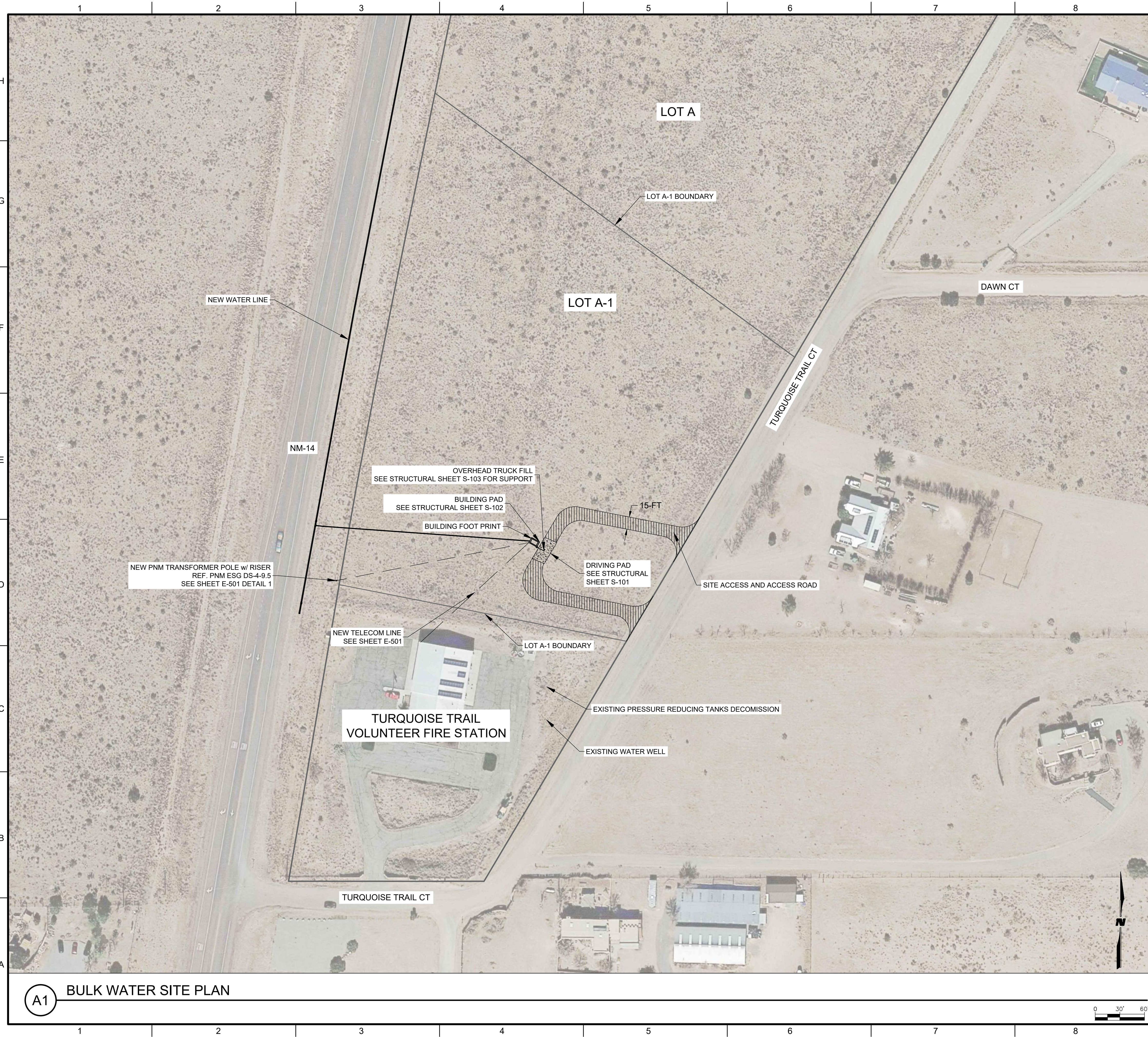


M:\MSD\23-600-156-002_Disciplines_SHEETS\8_sheets - utilities\2361560_C-501.dwg
2/16/2024



GENERAL NOTES:

1. LOCATION OF ALL UTILITIES SHALL BE FIELD VERIFIED BY CONTRACTOR PRIOR TO BEGINNING WORK. THE LOCATION OF EXISTING UTILITIES SHOWN ON THE DRAWINGS ARE BASED ON AVAILABLE RECORD INFORMATION, ABOVE GROUND FEATURES VISIBLE IN THE FIELD, AND VERBAL DESCRIPTIONS BY THE CITY OF LORDSBURG. IN THE EVENT CONDITIONS IN THE FIELD ARE NOT AS SHOWN ON THE DRAWINGS, CONTRACTOR SHALL NOTIFY THE PUBLIC INFRASTRUCTURE PROJECT MANAGER OR THE ENGINEER IMMEDIATELY SO THAT NECESSARY CHANGES TO THE DESIGN MAY BE MADE WITH THE MINIMUM OF INTERRUPTION TO THE PROJECT SCHEDULE.
2. ALL UTILITY CONSTRUCTION FOR IRRIGATION LINES, WATER LINES, SANITARY SEWER LINES, AND ALL APPURTENANCES SHALL BE IN ACCORDANCE WITH THE CITY OF LORDSBURG STANDARDS.
3. CONTRACTOR SHALL VERIFY FIELD LOCATION, TYPE, AND DEPTH OF ALL UTILITIES SHOWN AND NOT SHOWN.

WILSON & COMPANY
 4401 WASTHEAD ST. NE, SUITE 150
 ALBUQUERQUE, NM 87109
 PHONE: 505-348-4000
 FAX: 505-348-4055
 www.wilsonco.com

CONSULTANTS

SEAL
 80% SUBMITTAL
 NOT FOR CONSTRUCTION

PROJECT NAME
**SANTA FE COUNTY
 TURQUOISE TRAIL
 WATERLINE**

REV.	DATE	DESCRIPTION	BY

PROJECT NO: 23-600-156-00
 DESIGNED BY: ERC
 DRAWN BY: AC/SAS
 CHECKED BY: LC
 DATE: FEBRUARY 2024

SHEET TITLE
**BULK WATER
 SITE PLAN**

SHEET NO:
C-102

A1 BULK WATER SITE PLAN