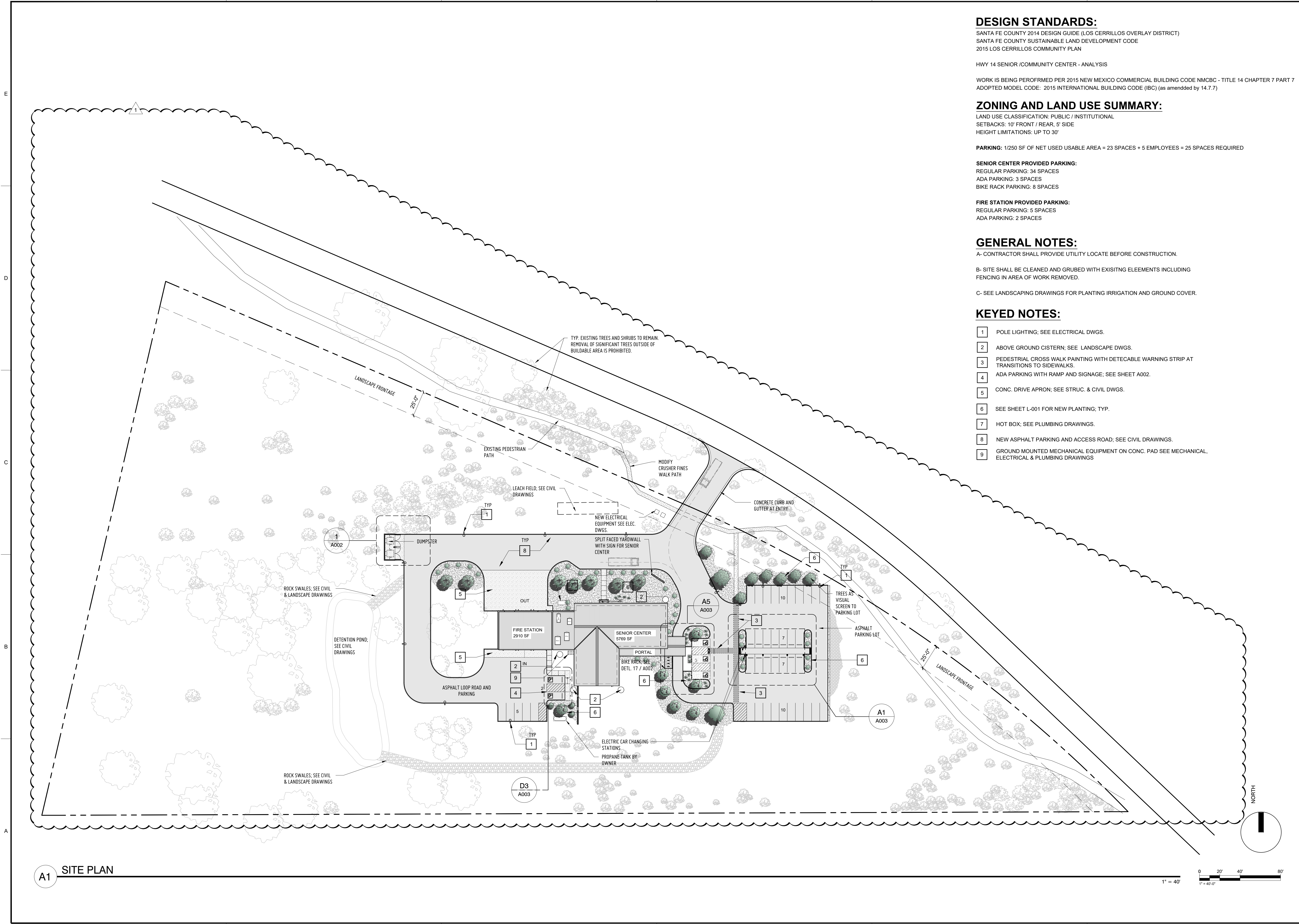


PLOT DATE: Oct 15, 2021, 11:13am
 FILENAME: C:\Users\khea_\OneDrive\Desktop\2020-09 Madrid Fire Station & Sr. ChicAD02_ARCH_SHEET2009_A001.dwg



DESIGN STANDARDS:

SANTA FE COUNTY 2014 DESIGN GUIDE (LOS CERRILLOS OVERLAY DISTRICT)
 SANTA FE COUNTY SUSTAINABLE LAND DEVELOPMENT CODE
 2015 LOS CERRILLOS COMMUNITY PLAN

HWY 14 SENIOR /COMMUNITY CENTER - ANALYSIS

WORK IS BEING PERFORMED PER 2015 NEW MEXICO COMMERCIAL BUILDING CODE NMCBC - TITLE 14 CHAPTER 7 PART 7
 ADOPTED MODEL CODE: 2015 INTERNATIONAL BUILDING CODE (IBC) (as amended by 14.7.7)

ZONING AND LAND USE SUMMARY:

LAND USE CLASSIFICATION: PUBLIC / INSTITUTIONAL
 SETBACKS: 10' FRONT / REAR, 5' SIDE
 HEIGHT LIMITATIONS: UP TO 30'

PARKING: 1/250 SF OF NET USED USABLE AREA = 23 SPACES + 5 EMPLOYEES = 25 SPACES REQUIRED

SENIOR CENTER PROVIDED PARKING:
 REGULAR PARKING: 34 SPACES
 ADA PARKING: 3 SPACES
 BIKE RACK PARKING: 8 SPACES

FIRE STATION PROVIDED PARKING:
 REGULAR PARKING: 5 SPACES
 ADA PARKING: 2 SPACES

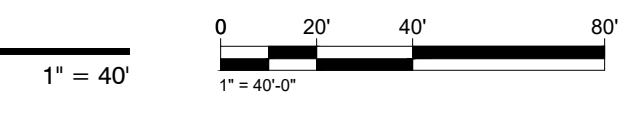
GENERAL NOTES:

- A- CONTRACTOR SHALL PROVIDE UTILITY LOCATE BEFORE CONSTRUCTION.
- B- SITE SHALL BE CLEANED AND GRUBBED WITH EXISTING ELEMENTS INCLUDING FENCING IN AREA OF WORK REMOVED.
- C- SEE LANDSCAPING DRAWINGS FOR PLANTING IRRIGATION AND GROUND COVER.

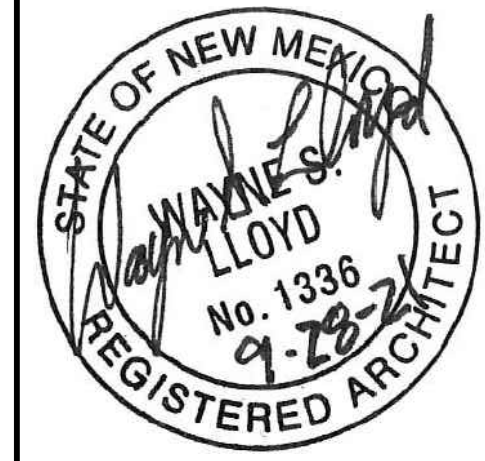
KEYED NOTES:

- 1 POLE LIGHTING; SEE ELECTRICAL DWGS.
- 2 ABOVE GROUND CISTERN; SEE LANDSCAPE DWGS.
- 3 PEDESTRIAN CROSS WALK PAINTING WITH DETECTABLE WARNING STRIP AT TRANSITIONS TO SIDEWALKS.
- 4 ADA PARKING WITH RAMP AND SIGNAGE; SEE SHEET A002.
- 5 CONC. DRIVE APRON; SEE STRUC. & CIVIL DWGS.
- 6 SEE SHEET L-001 FOR NEW PLANTING; TYP.
- 7 HOT BOX; SEE PLUMBING DRAWINGS.
- 8 NEW ASPHALT PARKING AND ACCESS ROAD; SEE CIVIL DRAWINGS.
- 9 GROUND MOUNTED MECHANICAL EQUIPMENT ON CONC. PAD SEE MECHANICAL, ELECTRICAL & PLUMBING DRAWINGS

A1 SITE PLAN



Lloyd & Associates
ARCHITECTS
 100 N Guadalupe St., Suite 201
 Santa Fe, NM 87501
 Telephone: 505-988-0789 Fax: 505-986-1165
 Web address: lloyd-architects.com



CERRILLOS SENIOR CENTER & TURQUOISE TRAIL FIRE STATION #3
 16 MAIN STREET, CERRILLOS, NEW MEXICO 87010

Current Status:
BIDDING

REVISIONS		
1	ADDENDUM #1	10-13-21

Drawn by: **RL/KL**
 Checked by: **SM**

Date: **09-28-2021**

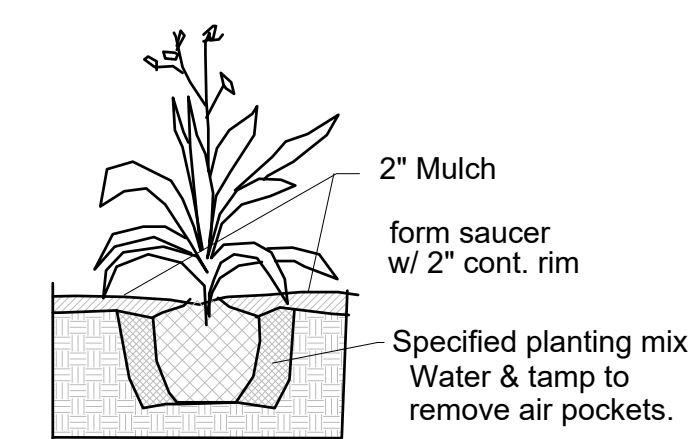
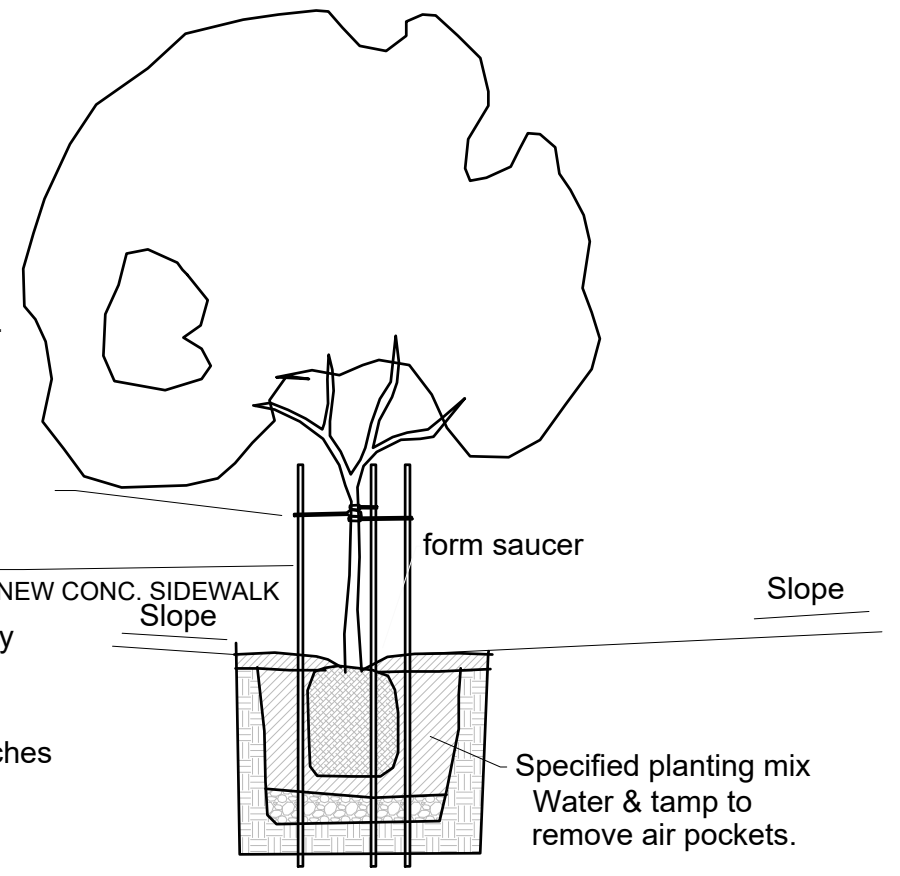
Sheet Title:
SITE PLAN

Job Number:

Sheet No.

A001

Plant so that top of root ball is even with the finished grade
 Paint all cuts over 1" dia.
 Note:
 Staking as required
 2 strand twisted 12 ga. galv. wire encased in 1" dia. rubber hose
 Hardwood stakes:
 1-3 stakes 2"x2" driven (min. 18") firmly into subgrade prior to backfilling
 Stake above first branches or as necessary for firm support



Tree Planting Detail

Shrub Planting Detail

- GENERAL NOTES:**
- 1 MAINTENANCE OF THE LANDSCAPE AND IRRIGATION SYSTEM TO BE PROVIDED BY THE OWNER
 - 2 THE LANDSCAPE PLAN IS DESIGNED TO MEET ALL OF THE SANTA FE COUNTY REQUIREMENTS.
 - 3 PLANT MATERIALS AND SIGNING WILL NOT INTERFERE WITH CLEAR SIGHT LINE REQUIREMENTS.
 - 4 LANDSCAPE AREAS SHALL BE DEPRESSED BELOW GRADE TO PROVIDE FOR PASSIVE WATER HARVESTING. GENERAL CONTRACTOR TO PROVIDE CURB CUTS FOR PARKING LOT DRAINAGE GUIDING STORM WATER TOWARDS LANDSCAPE AREAS.
 - 5 ALL LANDSCAPE AREAS TO BE COVERED WITH MULCH. USE 3/4" - 1" ROCK MULCH WITH MINIMUM DEPTH OF 2" AND NATIVE SEED COVER. SEE LANDSCAPE PLANS.
 - 6 GRADE SHALL BE PER CIVIL DRAWINGS; AREAS DISTURBED BY CONSTRUCTION SHALL BE SEEDED NATIVE DRYLAND GRASS MIX OR EQUAL. HYDROSEED WITH NATURAL GRASS STRAW.

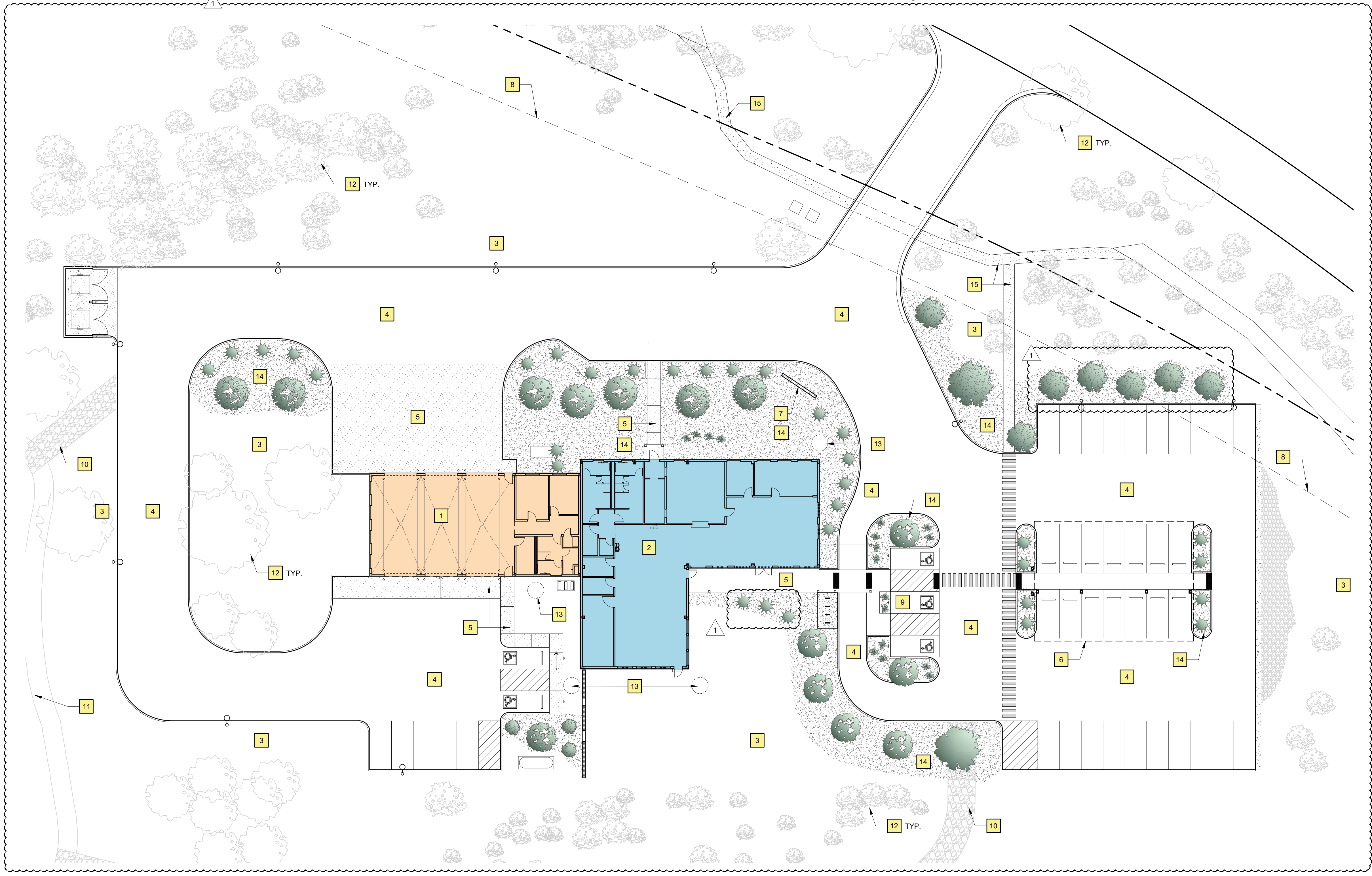
- PLANTING NOTES**
- 1 THE LANDSCAPE AND SITE DESIGN SHALL COMPLY WITH THE SANTA FE COUNTY LANDSCAPE AND SITE DESIGN REQUIREMENTS AS STATED IN ORDINANCE NO. 2011-37 -10.
 - 2 PLANT MATERIAL SELECTION EMPHASIZES DROUGHT TOLERANT SPECIES. NO HIGH WATER USE TURF IS USED.
 - 3 ALL REQUIRED DECIDUOUS TREES SHALL BE 2" CALIPER MINIMUM INSTALLED SIZE OR EQUIVALENT. ALL REQUIRED EVERGREENS SHALL BE A MINIMUM OF 6' HEIGHT INSTALLED SIZE. ALL REQUIRED SHRUBS SHALL BE 5 GAL. MINIMUM INSTALLED SIZE. SEE PLANTING DETAILS FOR TYPICAL INSTALLATIONS.
 - 4 PLANTS LOCATED AT THE BOTTOM THIRD OF THE PONDING AREAS MUST BE ADAPTABLE TO PERIODS OF SUBMERSION.
 - 5 STREET TREES SHALL BE INSTALLED AND MAINTAINED TO PROVIDE A MINIMUM OF 80" VERTICAL CLEARANCE FOR THE FULL WIDTH OF THE SIDEWALK / PEDESTRIAN ROUTE.
 - 6 PROVIDE AND MAINTAIN 114" OF VERTICAL CLEARANCE AT ALL ACCESSIBLE PARKING SPACES.
 - 7 WHERE MULCH IS ADJACENT TO THE CONCRETE, FINISH GRADE OF MULCH SHALL BE APPROXIMATELY 1/2" BELOW THE TOP OF THE CONCRETE.
 - 8 EXCAVATE A HOLE TWICE THE WIDTH OF THE ROOTBALL AND 1-1/2 TIMES THE DEPTH. MIX IN COMPOST TO THE NATIVE SOIL WHEN PLANTING. LEAVE A 4" DEEP X CIRCUMFERENCE OF THE TREE CANOPY "WELL" SURROUNDING THE TREE BASE. SPRINKLE TERRA PRO AND PROTEIN CRUMBLES AS DIRECTED BY INSTRUCTIONS. WATER TREE AND SHRUB "WELL" TWICE COMPLETELY AFTER PLANTING. COVER "WELL" WITH 2" MULCH AS INDICATED ON PLAN. SEE PLANTING DETAILS FOR FURTHER INFORMATION.

NEW PLANTING & MULCH SCHEDULE

SYMBOL	DESCRIPTION	QUANTITY
	3/4"-1" ROCK MULCH, COLOR TBD, (2" DEPTH OVER FILTER FABRIC, DEWITT PRO-5 WEED CONTROL OR EQUAL)	11951 SF
	REFER TO CIVIL DRAWINGS FOR LOCATIONS AND QUANTITY	
	ACER NEGUNDO 'SENSATION' SENSATION BOX ELDER	14
	JUNIPERUS MONOPERMA	12
	ARTEMISA FILIFOLIA	32
	SALVIA GREGII	17

LANDSCAPE KEYNOTES:

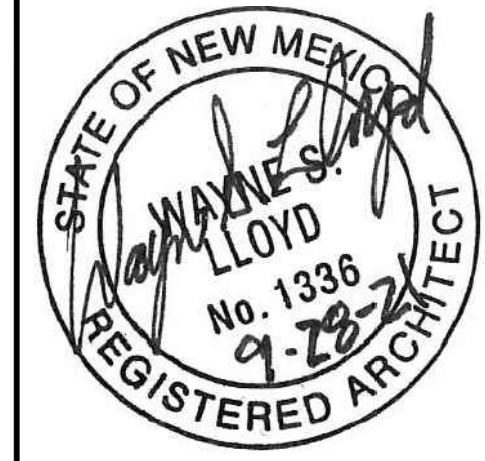
- 1 FIRE STATION
- 2 SENIOR CENTER
- 3 GRADE PER CIVIL DWGS.; PROVIDE NATIVE SEEDING
- 4 NEW ASPHALT
- 5 CONCRETE PAVING
- 6 PARKING SHADE ABOVE (TO BE PROVIDED BY PV SUPPLIER)
- 7 SIGNAGE WALL
- 8 25' WIDE LANDSCAPE FRONTAGE
- 9 NEW CONCRETE PARKING (ADA ONLY)
- 10 NEW ROCK SWALE OF 2"- 4" LOCAL COBBLE; SEE CIVIL DWGS.
- 11 NEW DETENTION POND (SEE CIVIL DRAWINGS FOR FULL SCOPE)
- 12 EXISTING TREES / SHRUBS TO REMAIN
- 13 ABOVE GRADE CISTERN; SEE SHEET L-002
- 14 NEW PLANTING WITH SWALE OR GRAVEL MULCH TO TAKE RUNOFF
- 15 NEW CRUSHER FINES PATH



A1 ENLARGED LANDSCAPE PLAN

1" = 20'

Lloyd & Associates
ARCHITECTS
 100 N Guadalupe St., Suite 201
 Santa Fe, NM 87501
 Telephone: 505-988-9789 Fax: 505-986-1165
 Web address: lloyd-architects.com



CERRILLOS SENIOR CENTER & TURQUOISE TRAIL FIRE STATION #3
 16 MAIN STREET, CERRILLOS, NEW MEXICO 87010

Current Status:
BIDDING

REVISIONS		
1	ADDENDUM #1	10-13-21
-	-	-
-	-	-
-	-	-

Drawn by: **RL/KL**
 Checked by: **SM**

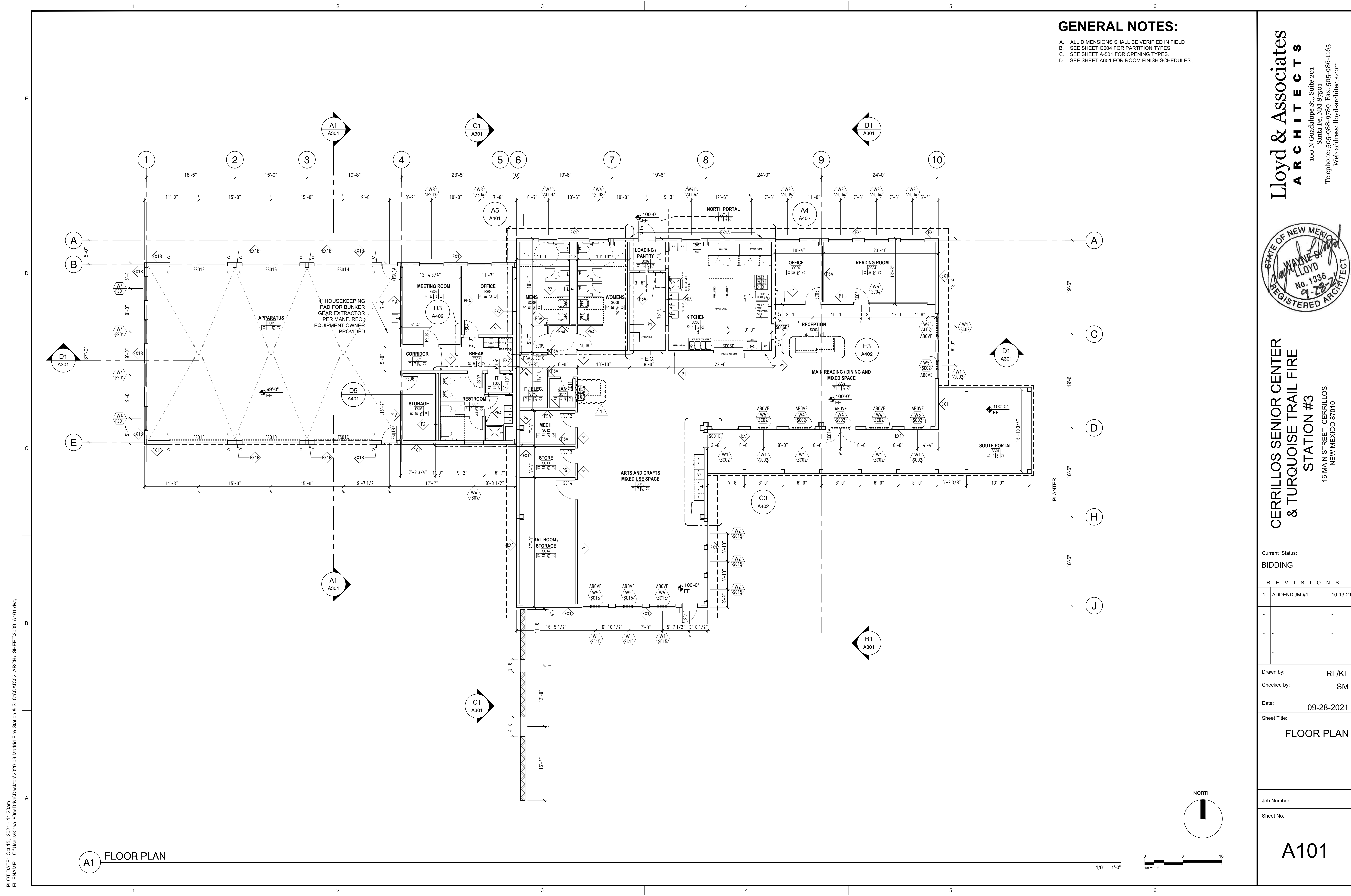
Date: **09-28-2021**

Sheet Title:
LANDSCAPE PLAN

Job Number:

Sheet No.

L001



GENERAL NOTES:

- A. ALL DIMENSIONS SHALL BE VERIFIED IN FIELD
- B. SEE SHEET G004 FOR PARTITION TYPES.
- C. SEE SHEET A-501 FOR OPENING TYPES.
- D. SEE SHEET A601 FOR ROOM FINISH SCHEDULES.

Lloyd & Associates
ARCHITECTS
 100 N Guadalupe St., Suite 201
 Santa Fe, NM 87501
 Telephone: 505-988-0789 Fax: 505-986-1165
 Web address: lloyd-architects.com



**CERRILLOS SENIOR CENTER
 & TURQUOISE TRAIL FIRE
 STATION #3**
 16 MAIN STREET, CERRILLOS,
 NEW MEXICO 87010

Current Status:
BIDDING

REVISIONS		
1	ADDENDUM #1	10-13-21

Drawn by: **RL/KL**
 Checked by: **SM**

Date: **09-28-2021**

Sheet Title:
FLOOR PLAN

Job Number:

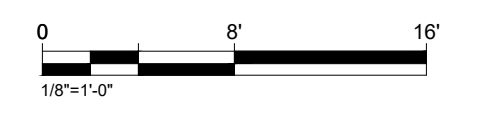
Sheet No.

A101

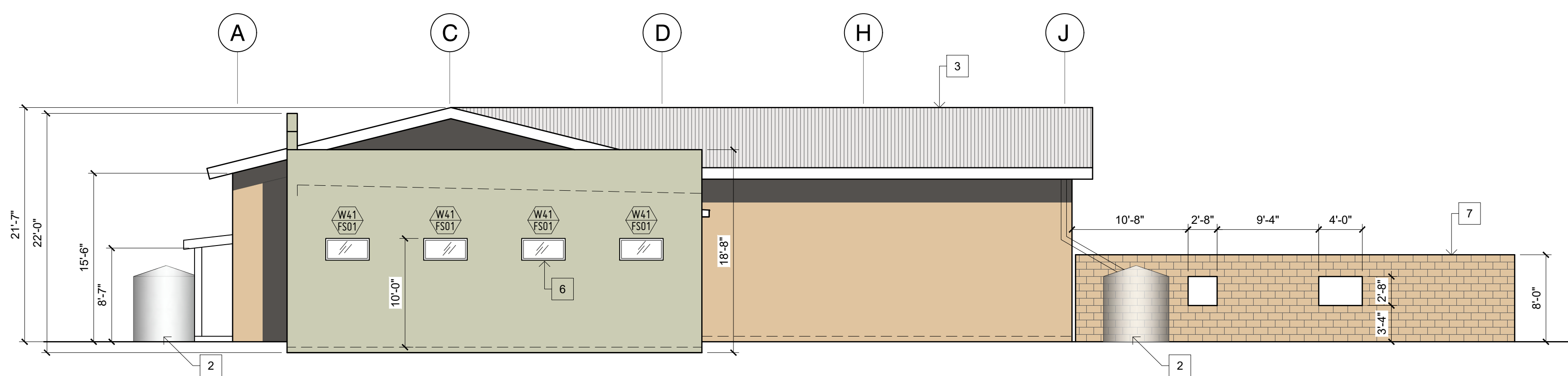
PLOT DATE: Oct 15, 2021, 11:20am
 FILENAME: C:\Users\khea_1\OneDrive\Desktop\2020-09 Madrid Fire Station & Sr ChCAD02_ARCH_SHEET2009_A101.dwg

A1 FLOOR PLAN

1/8" = 1'-0"

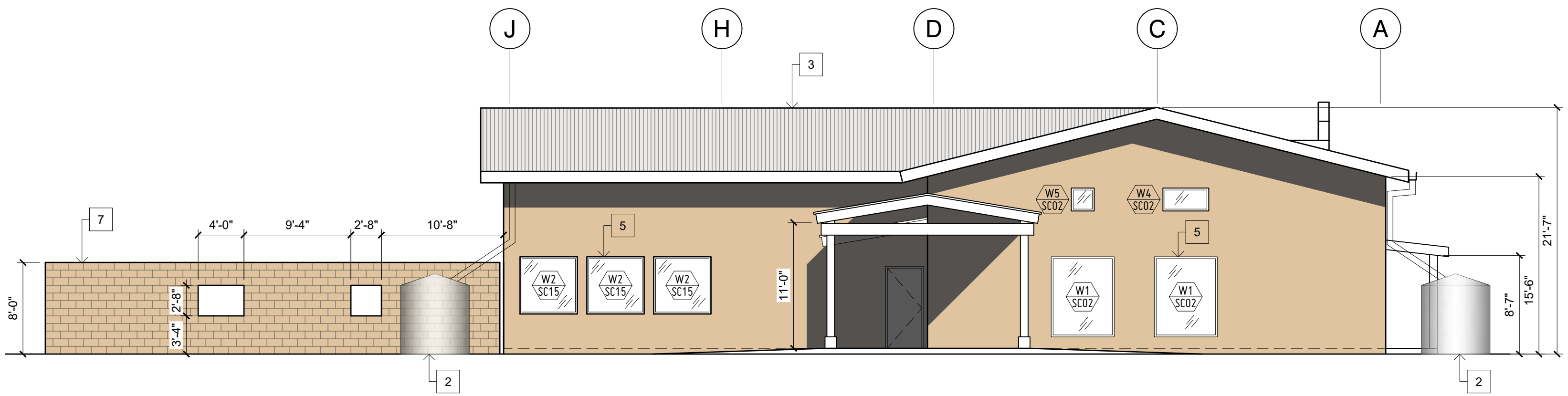


PLOT DATE: Sep 28, 2021, 3:02pm
 FILENAME: X:\2020-09_Matrid Fire Station & Sr.CHCAD\02_ARCH_SHEET\2009_A201.dwg



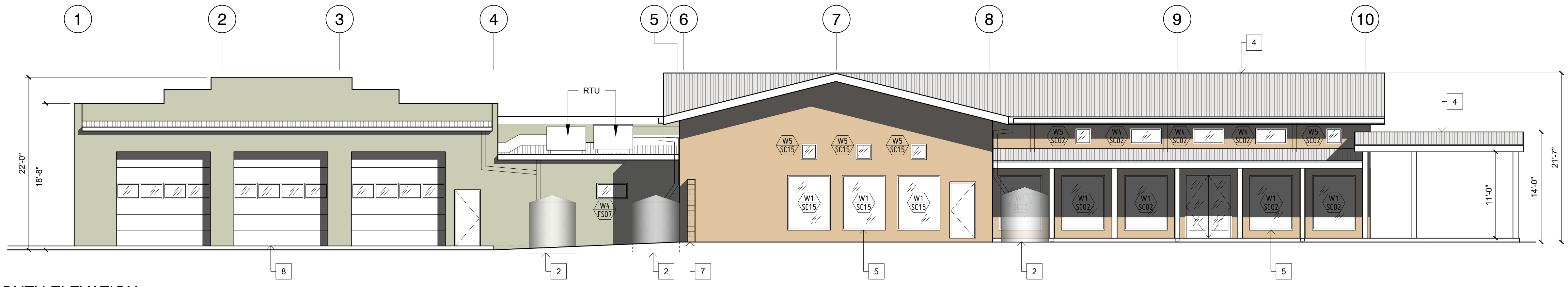
D1 WEST ELEVATION

1/8" = 1'-0"



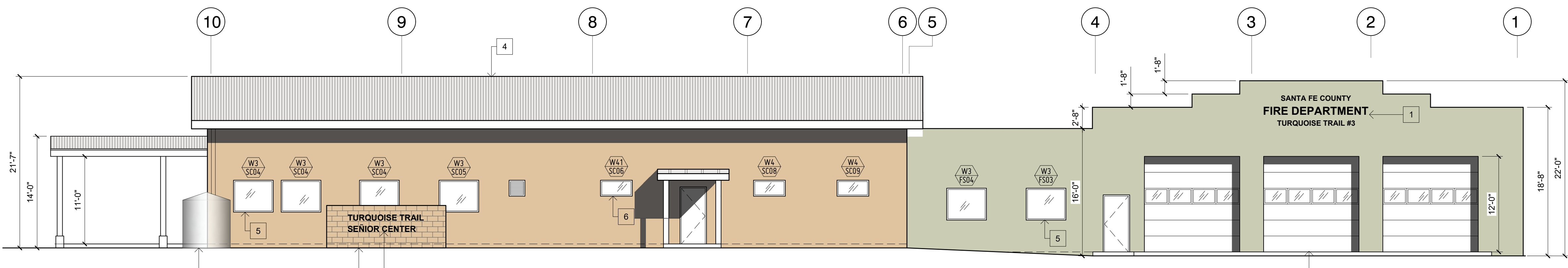
C1 EAST ELEVATION

1/8" = 1'-0"



B1 SOUTH ELEVATION

1/8" = 1'-0"



A1 NORTH ELEVATION

1/8" = 1'-0"

GENERAL NOTES:

- A. TURQUOISE FIRE STATION AND SENIOR CENTER ARE AT DIFFERENT ELEVATIONS. REFER TO CIVIL SHEET GR-1, GRADING & DRAINAGE PLAN.

KEYED NOTES:

- 1 WALL APPLIED ALUMINUM SIGNAGE; SUBCONTRACTOR SHALL SUBMIT SHOP DRAWINGS FOR APPROVAL.
- 2 GALVANIZED ABOVE GRADE CISTERNS; SEE LANDSCAPE DRAWINGS.
- 3 CORRUGATED EXPOSED FASTENER
- 4 R-PANEL EXPOSED FASTENER
- 5 STOREFRONT, SEE ARCHITECTURAL SHEET A501 FOR MORE DETAILS.
- 6 STOREFRONT, OBSCURE GLASS. SEE ARCHITECTURAL SHEET A501 FOR MORE DETAILS.
- 7 SPLIT FACED CMU, INTEGRAL COLOR
- 8 TYP. ROLL-UP DOORS: SEE ARCHITECTURAL SHEET A502 AND A601 FOR MORE DETAILS.

Lloyd & Associates
ARCHITECTS
 100 N Guadalupe St., Suite 201
 Santa Fe, NM 87501
 Telephone: 505-988-0789 Fax: 505-986-1165
 Web address: lloyd-architects.com



CERILLOS SENIOR CENTER AND TURQUOISE TRAIL # 3 FIRE STATION
 LOT 3, SECTION 17, T.14N., R.8E., N.M.P.M., SANTA FE COUNTY, NEW MEXICO

Current Status:
100% PERMIT SET

REVISIONS	

Drawn by: RL/KL
Checked by: SM

Date: 09-28-2021

Sheet Title:
ELEVATIONS

Job Number:

Sheet No.

A201